


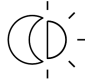





# sensIQ S

EVO black  
 EAN 4007841 034979  
 Article number 034979



		2000 W					Teach		5 years
<small>infrared sensor 3 x 100°</small>	<small>3 zones scalable 2-20m</small>	<small>2000 W max. (LED- ready)</small>	<small>IP54</small>	<small>2 - 2000 lux daylight operation</small>	<small>5 sec - 15 min</small>	<small>ideal 2 - 5 m</small>	<small>Teach mode</small>	<small>energy saving</small>	<small>manufacturer's warranty steinel- professional.de/ garantie</small>

## Function description

The evolution of perfection. The sensIQ S is just as perfect as its larger role model. For indoors and outdoors, ideal for building entrances, loading bays, for mounting heights of up to 5 m, quadruple sensor system for optimum surveillance over 3x100° coverage angle, 20 m reach (tangential), reach setting to the accuracy of a metre in 3 independent directions. Remote control and corner wall mount bracket included.

## Technical specifications

Dimensions (L x W x H)	128 x 114 x 74 mm
With motion detector	Yes
Manufacturer's Warranty	5 years
Settings via	Remote control, Potentiometers, Smart Remote
With remote control	Yes
Version	black
PU1, EAN	4007841034979
Type	Motion detectors
Application, place	Indoors, Outdoors
Application, room	multi-storey / underground car park, outdoors, warehouse, front door, all round the building, courtyard & driveway, Indoors
Colour	black
Colour, RAL	9005
Includes corner wall mount	Yes
Installation site	wall, corner

LED lamps > 8 W	600 W
Capacitive load in µF	176 µF
Power supply, detail	500 VA max., 120 V
Sensor Technology	Passive infrared
Mounting height	2,00 – 5,00 m
Mounting height max.	5,00 m
Optimum mounting height	2 m
Detection angle	300 °
Angle of aperture	180 °
Sneak-by guard	Yes
Capability of masking out individual segments	Yes
Electronic scalability	No
Mechanical scalability	Yes
Reach, radial	r = 4 m (42 m <sup>2</sup> )
Reach, tangential	r = 20 m (1047 m <sup>2</sup> )
Switching zones	1360 switching zones

# sensIQ S

EVO black  
 EAN 4007841 034979  
 Article number 034979



## Technical specifications

Installation	Surface wiring, Wall, corner
IP-rating	IP54
Ambient temperature	-20 – 50 °C
Material	Plastic
Mains power supply	100 – 240 V / 50 – 60 Hz
Switching output 1, resistive	2000 W
Fluorescent lamps, electronic ballast	1500 W
Fluorescent lamps, uncorrected	1000 VA
Fluorescent lamps, series-corrected	700 VA
Fluorescent lamps, parallel-corrected	1000 VA
Switching output 1, low-voltage halogen lamps	1000 VA
LED lamps < 2 W	100 W
LED lamps > 2 W < 8 W	300 W

Functions	Normal / test mode, Manual ON / ON-OFF
Twilight setting	2 – 1000 lx
Time setting	5 s – 15 Min.
Basic light level function	No
Main light adjustable	No
Twilight setting TEACH	Yes
Constant-lighting control	No
Interconnection	Yes
Type of interconnection	Master/master
Interconnection via	Cable

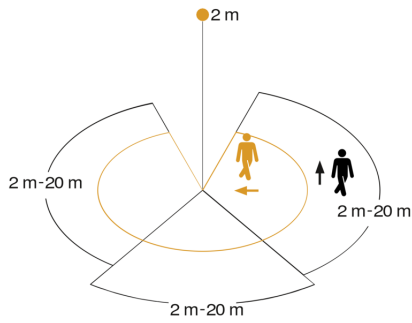
## Accessories

EAN 4007841 007638	Remote control RC9
EAN 4007841 608804	Corner wall mount sensIQ S
EAN 4007841 608835	Corner wall mount sensIQ S
EAN 4007841 009151	Remote control Smart Remote
EAN 4007841 608828	Corner wall mount sensIQ S

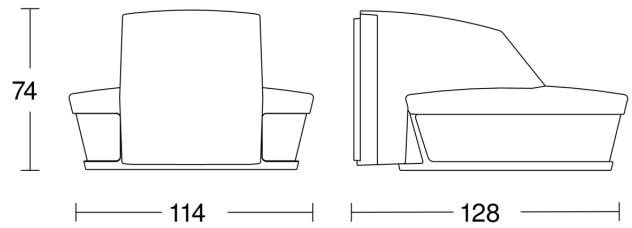
# sensIQ S

EVO black  
 EAN 4007841 034979  
 Article number 034979

## Detection Zone

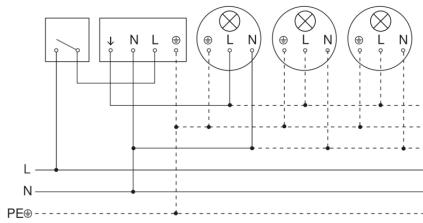


## Dimension Drawing

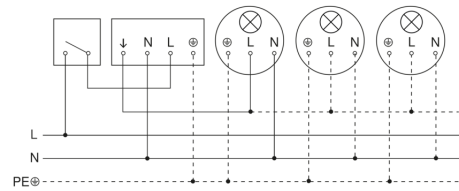


Mögliche Montagehöhe: 2,00 m – 5,00 m  
 Orange: radial  
 Schwarz: tangential  
 3 skallerbare Zonen

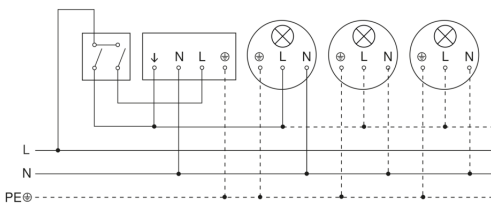
## Light without neutral conductor



## Light with neutral conductor



## Connection using two-circuit switch for manual and automatic operation



## Connection of 4-fold push-button coupler to DALI2 APC

